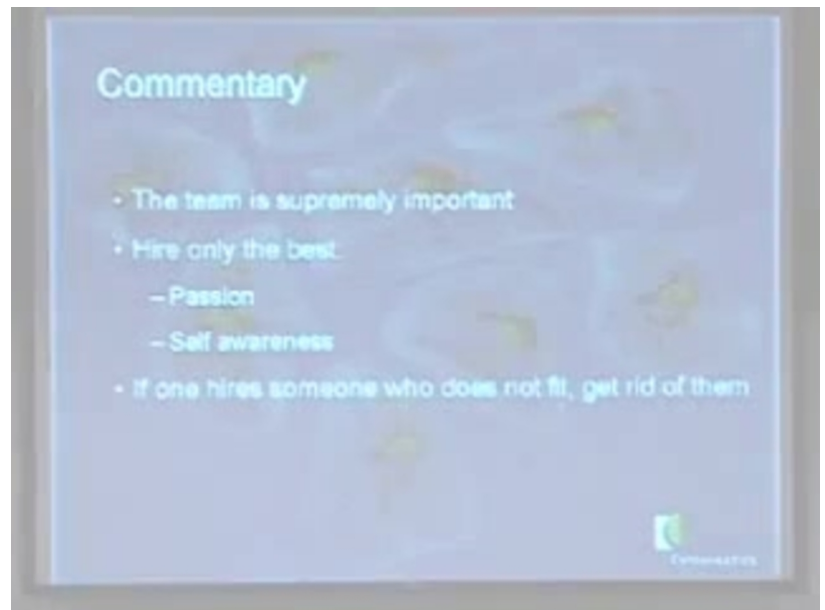


URL: <https://stvp.stanford.edu/blog/videos/smart-leadership-assembles-a-smart-team>

No CEO should strive to be the best person on the team, says Cytokinetics Chairman, Co-founder, and former CEO James Sabry. His advice is that the organization's best leaders are instructive and guiding, suggesting where to put the ladder, but not climbing it themselves. Half of the job of a start-up CEO is to assemble the very best team possible. Furthermore, keen emotional intelligence goes a long way, says Sabry, and a failure in communication is the reason most employees fail on the job.



Transcript

English subtitles are not available for this media..